

Stairs Lino, realizzato in 100% fibra di lino, è tessuto a mano su telai artigianali. Porta uno stile sofisticato in ogni ambiente attraverso la naturale brillantezza delle fibre che si prestano al gioco di sapienti intrecci a creare eleganti nuances di colore. È disponibile in una palette di 5 colori tinta unita abbinabili tra loro ed è personalizzabile nelle misure con un'altezza massima di 350 cm.


Stairs Lino, 100% linen and hand woven on artisan looms, is a highly sophisticated rug collection. Thanks to its natural sheen, this fibre is perfect for creating carpets with elegant shading. A palette of 5 plain colors is available and their combinations can be customized in rugs of up to 350 cm.



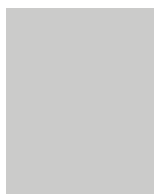


Materiale: lino
Struttura: tessuta a mano su telai artigianali
Dorso: è consigliato l'utilizzo del sottotappeto G.T.DESIGN
Dimensioni: variazioni del +/- 3% sono considerate nella norma
Manutenzione: battitappeto potenza minima prestando attenzione ai bordi
Lavaggio: consigliato lavaggio professionale
Spessore: 11 mm

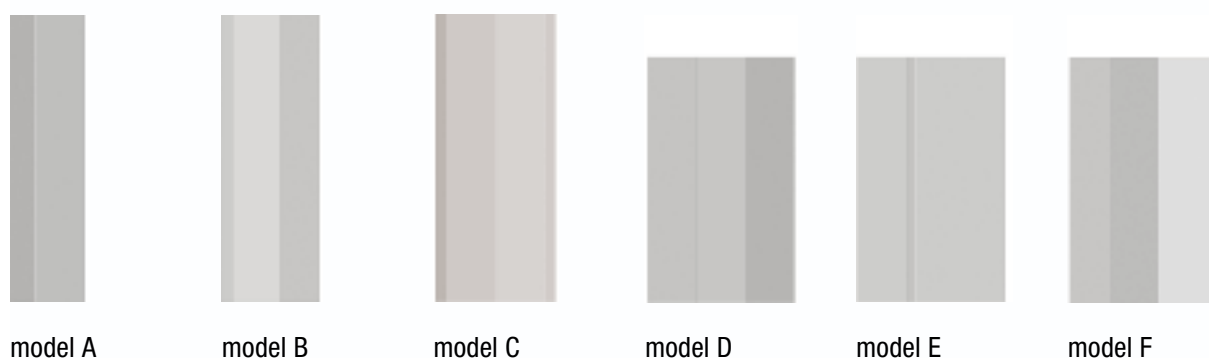
Material: linen
Structure: hand woven on traditional looms
Backing: we advise using a G.T.DESIGN anti-slip undermat
Dimension: variations of +/- 3% are to be considered the norm
Maintenance: vacuum cleaner on a low setting taking care on the edges
Washing: professional cleaning recommended
Thickness: 11 mm

custom size	estimated delivery time	colours	dimensions / finishing
	10/12 weeks approx.	06 - 09 - 12 14 - 24  custom colour on demand	max width 350 cm / 11'6" ft - all lengths also in round shapes matching border with loop pile on both ends

standard size	estimated delivery time	colours	finishing
	8/10 weeks approx.	06 - 09 - 12 14 - 24	matching border with loop pile on both ends

standard size	code	dimensions cm (ft)
Plain		
	49-4240	200 x 300 (6'7" x 9'10")
	49-4245	250 x 350 (8'2" x 11'6")
	49-4250	300 x 400 (9'10" x 13'1")

suggested designs (size and colours on demand)



model A

model B

model C

model D

model E

model F

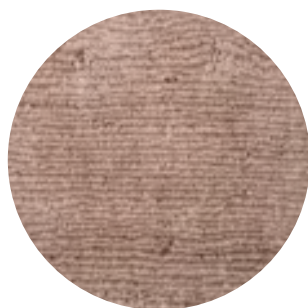
matching border with cut pile on both ends



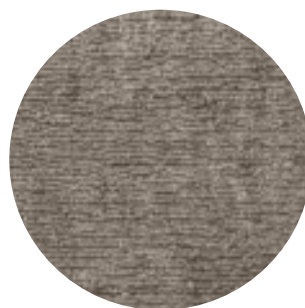
colour palette



09



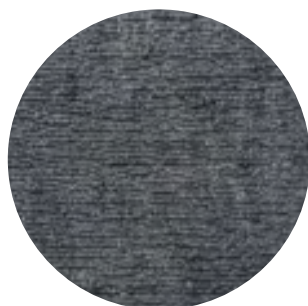
14



12



06



24



Stairs Lino
Model C
120 x 300 cm | 3'11" x 11'6" ft



Stairs Lino
Model D







Stairs Lino
Model B